



E-BOOK

# 9 Biggest Challenges in Your Warehouse

– and How to Overcome Them with Tasklet

# Turn Your Frustrations Into Lasting Success

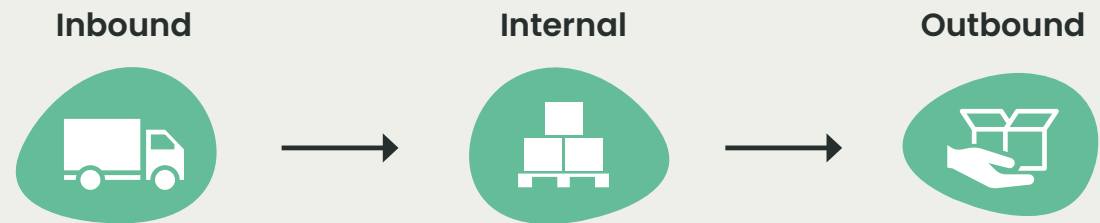
Welcome to a warehouse manager's guide to transforming your warehouse workflows. We know how frustrating it can be to manage your inbound, internal, and outbound processes using pen and paper or user-hostile technology, and this e-book is designed to help you tackle the common pain points head-on.

Dive in to discover how Tasklet Mobile WMS can transform each step of your warehouse process through barcode scanning, saving you time, reducing errors, and improving your overall performance.



# Table of Contents

<b>Inbound warehouse process</b> . . . . .	4
#1 Receiving and registering goods is difficult . . . . .	5
#2 Handling faulty orders . . . . .	6
#3 Put-Away Errors . . . . .	7
<b>Internal warehouse process</b> . . . . .	8
#1 Moving and locating stock . . . . .	9
#2 Slow and Error-Prone Stock Take . . . . .	10
#3 Warehouse Operational Vulnerability . . . . .	11
<b>Outbound warehouse process</b> . . . . .	12
#1 High Costs and Wasted Time from Inefficient Picking . . . . .	13
#2 Sending Wrong Items Too Late . . . . .	14
#3 Lack of Visibility in Shipping Processes . . . . .	15
<b>Tasklet Mobile WMS Features</b> . . . . .	16
<b>Warehouse Management Made Easy</b> . . . . .	17



# Inbound warehouse process

In the inbound stage, you'll learn how to overcome the headaches of manual registrations and handling faulty orders, where missing barcodes and misplaced goods often throw operations into chaos.



# Receiving and registering goods is difficult



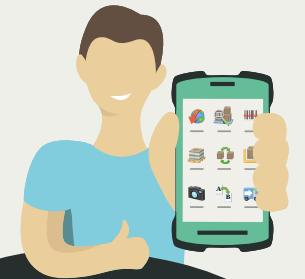
## #1

### Challenge

Manual registrations of goods are a headache – full of errors and painfully slow. You're bound to make mistakes when you're scribbling on paper or trying to remember everything by head. And let's not forget the frustration of constantly running back and forth between the goods and a computer just to log what came in.

### Solution

To set you up for success in the rest of your warehouse processes, it is imperative that you have your processes set right now rather than later. Tasklet provides digital guidance (order details, vendor info, item images, and barcode validation) on the screen with validation through barcode scanning, ensuring that the correct items and quantities are received.



#### Did you know?

*Tasklet's feature License plating is used to group and identify warehouse inventory more effectively by grouping multiple items together when you're receiving, putting away, and moving goods using one scan only.*

# Handling faulty orders



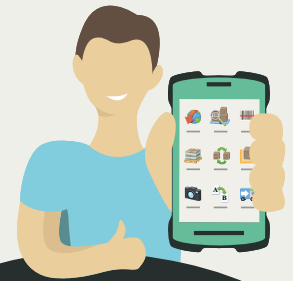
## #2

### Challenge

Handling a large number of incoming goods is tough, but it's even more frustrating when the items don't meet expectations. Missing barcodes or damaged products not only eat up valuable time but create avoidable setbacks. Reducing these issues is key to keeping your operations flowing smoothly.

### Solution

Tasklet Mobile WMS takes the stress out of these situations. With the ability to print labels, attach images, and add missing barcodes right on the spot, you can address issues as they come up. No more extra trips to a computer—just real-time data, barcode scanning, and quick screen taps to keep your workflow smooth and stress-free.

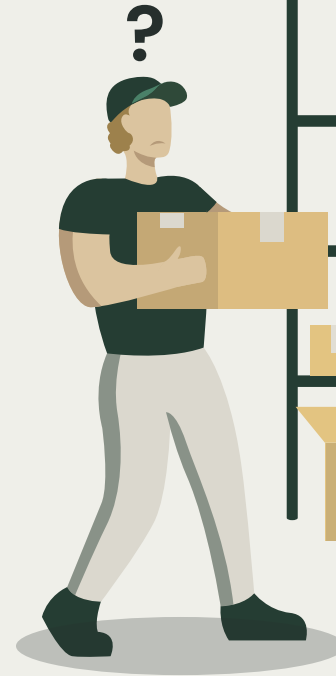


#### Did you know?

*You can use Tasklet even when you're offline. Once you step into Wi-Fi reach again, all your data from when you worked offline will be uploaded to your ERP system. Takes the worry away from unreliable Wi-Fi and lets you focus on what's important!*

## INBOUND WAREHOUSE PROCESS

# Put-Away Errors



## #3

### Challenge

Nothing spells chaos like a misplaced pallet or an item in the wrong spot. It turns your warehouse into a never-ending game of hide and seek with inventory – and let's be honest, nobody enjoys that! As workers race against the clock to track down missing items, orders pile up, and your efficiency takes a serious dive.

### Solution

Tasklet Mobile WMS takes the guesswork out of put-away. With real-time tracking and clear, step-by-step instructions, you can easily scan both the item and its bin to ensure everything is placed correctly. If a put-away doesn't match the ERP plan, Tasklet sends an instant warning to prevent errors. The system updates in real time, allowing flexibility while ensuring accuracy. By automating this process, you reduce the risk of misplaced stock, improve efficiency, and get it right the first time, every time.

# Internal warehouse process

Internally, we address the constant struggle of tracking stock in what feels like a maze, and how slow, error-prone stock takes drag down efficiency.





## INTERNAL WAREHOUSE PROCESSES

# Moving and locating stock



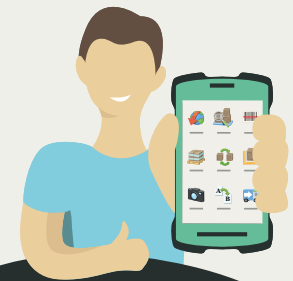
### #1

## Challenge

Do you feel like your warehouse is a never-ending maze, where moving and relocating stock turns into a frustrating guessing game? Manually tracking inventory or dealing with outdated systems often leads to errors. Items get misplaced, orders are delayed, and the frustration mounts – for both you and your customers.

## Solution

Tasklet Mobile WMS brings clarity to the chaos. With real-time barcode scanning on a mobile device, you can move stock efficiently while keeping your inventory perfectly in sync, using features for Planned Move, Unplanned Move and Bulk Move. No more paperwork or manual updates, so you always know exactly where your stock is and where it needs to go, making the whole process faster and error-free.



### Did you know?

*Tasklet has features for Production and Assembly with registration of all your production data, including consumed items, setup time, run time, and output directly from your device. It combines components, record output, and integrates assembled items into stock – all on the production floor.*

## INTERNAL WAREHOUSE PROCESSES

# Slow and Error-Prone Stock Take



## #2

### Challenge

Is manual counting slowing you down? It's a real drag! Each tedious round of counting not only takes up precious time but also opens the door to errors. A single miscount can lead to discrepancies in your inventory records, causing stock shortages or excess that complicate your operations.

### Solution

Let Tasklet Mobile WMS transform your counting process. Digitizing stocktaking speeds up operations while reducing errors. On-screen guidance shows workers what and where to count, and barcode scans ensure accuracy and feed data directly into your ERP system. Streamline your stock counts and keep your operations running smoothly and efficiently.

## INTERNAL WAREHOUSE PROCESSES

# Warehouse Operational Vulnerability



## #3

### Challenge

Depending on one person for product locations and processes puts your warehouse operations at risk. When team members follow different processes and data-entry styles, it not only creates confusion but also exposes your operations to greater risk of errors and delays.

### Solution

With Tasklet, all data is accessible to everyone through user-friendly look-up functions. This makes onboarding new team members a breeze and ensures that everyone is aligned in all your warehouse operations. Collaboration becomes effortless, reducing your vulnerability to staff changes, sick leave, and errors that can derail your workflow. With Tasklet, you can keep things running smoothly, no matter the circumstances.

# Outbound warehouse process

Finally, in outbound operations, we tackle the frustrations of picking mistakes, delayed shipments, and the lack of shipping visibility, which often erode trust and client satisfaction.



## OUTBOUND WAREHOUSE PROCESSES

# High Costs and Wasted Time from Inefficient Picking



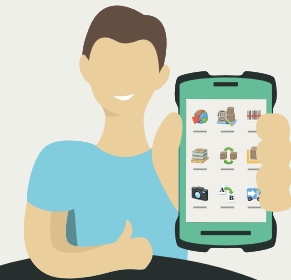
### #1

## Challenge

Inefficient picking eats away at your budget and drains your team's productivity. Every extra step your employees take to locate items adds up, increasing costs and dragging down efficiency. When items are misplaced, tools are outdated, or the warehouse layout isn't optimized, each pick becomes more time-consuming and costly. The result? More labor hours, longer order processing times, and frustrated employees.

## Solution

Tasklet streamlines your picking process with intuitive validation and control through barcode scanning, ensuring that employees quickly locate and pick the right items. With clear directions on item details, bin locations, and quantities, you'll reduce time and costs per pick, boost employee efficiency, and accelerate order processing, so your team can work faster and smarter.

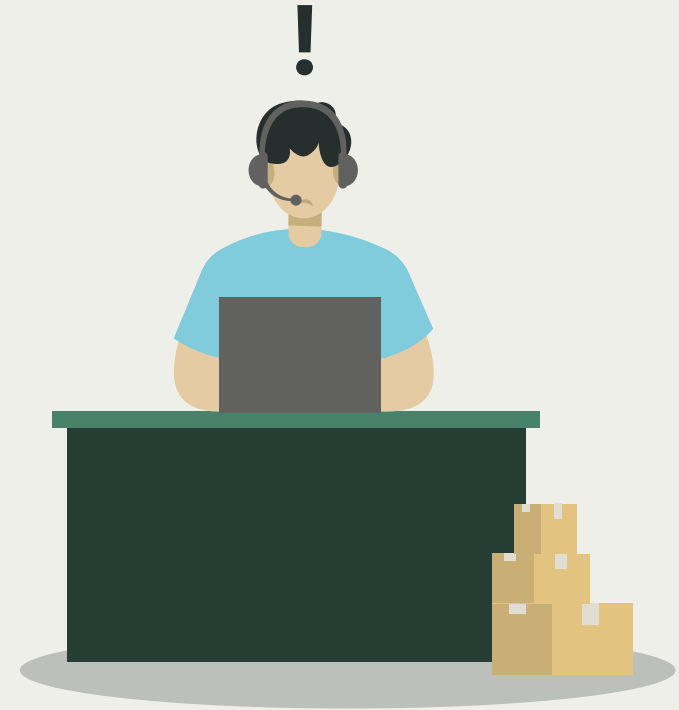


### Did you know?

*Tasklet's feature Pick supports predefined picking routes, allowing you to optimize efficiency by following the fastest path through the warehouse when items need to be picked for a sales order, production order, purchase return, or transfer order, ensuring the correct items are picked.*

## OUTBOUND WAREHOUSE PROCESSES

# Sending Wrong Items Too Late



## #2

### Challenge

Picking and sending the wrong items or delivering them late can create a domino effect of problems. Incorrect picking and shipments lead to handling returns, taking up a lot of time and disrupting your workflow. If you're not careful, you risk losing valuable relationships as unhappy stakeholders, customers and partners turn to competitors.

### Solution

With Tasklet, you receive clear guidance through barcode scanning, ensuring you have the correct item number and all necessary information about the products you're sending. If you accidentally scan the wrong item, the system alerts you immediately. This contributes to maintaining strong customer relationships, even in a time where clients have many different options.

## OUTBOUND WAREHOUSE PROCESSES

# Lack of Visibility in Shipping Processes



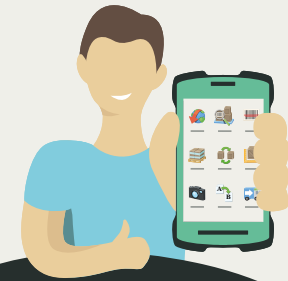
## #3

### Challenge

Managing shipping can feel like a constant struggle when it's disconnected from the rest of your warehouse process in MS ERP systems. Once goods leave the warehouse, tracking them becomes a challenge without the right setup, often leading to delays, errors, and frustration as staff struggle to stay informed about shipments. This lack of visibility not only impact your operations but can also affect customer satisfaction.

### Solution

Tasklet's Pack & Ship feature enables full shipping management directly in the ERP, handling everything from dimensions and costs to label printing. Partnered with multi-carrier software, Pack & Ship allows shipments to be processed and labels to be printed instantly from a handheld scanner. This integrated approach saves time, reduces errors, and streamlines the entire shipping process.



### Did you know?

*Tasklet's Pack & Ship feature streamlines outbound processes by linking picking, packing, and shipping using license plates. With unique IDs, items are organized in boxes or pallets. Pickers register item under a license plate, log its location for packing, and enable seamless handoff for shipping.*

# All Features for Microsoft Dynamics 365 BC/NAV

-  **Receive**  
Register and control received items. Supports lot-/serial numbers and expiry dates.
-  **Locate Item**  
Look-up the bin, the available quantity, and the product data of an item.
-  **Adjust Quantity**  
Complete a negative adjustment and provide a reason code.
-  **Production**  
Report consumption, output, and time on released production orders.
-  **Pick**  
Picking of single or consolidated orders.
-  **Bin Content**  
Look-up the content of a warehouse bin.
-  **Shipping**  
Perform shipment of your items from the mobile device.
-  **Pack & Ship**  
Finish the packing and shipping directly from the mobile device.
-  **Put Away**  
Assign a bin to the received items.
-  **Print Label**  
Print labels from the mobile device.
-  **Assembly**  
Report consumption and output on assembly orders.
-  **License Plating**  
Group and move items with one scan and improve efficiency.
-  **Move**  
Perform planned, unplanned, and bulk movements of items.
-  **Item Cross Reference**  
Associate or add a barcode to an existing item.
-  **Count**  
Perform planned count
-  **Unplanned Move**  
Perform unplanned movements of items.
-  **Substitute Item**  
Scan an item barcode and look-up substitute items.
-  **Unplanned Count**  
Perform unplanned counts.
-  **Bulk Move**  
Perform unplanned bulk movements. Allows you to move all from one bin to another.
-  **Attach Image**  
Use the camera on your mobile device to attach pictures in the work process or create item images.
-  **Item Dimension**  
Add or maintain unit of measure codes, including quantity per unit, measurements, and weight of an item.

[Explore Now](#)



MOBILE WMS FOR MS DYNAMICS 365 ERP

# Warehouse Management Made Easy

Experience the benefits of SCAN-tastic Tasklet Mobile WMS and watch your error rate drop and your customers' satisfaction levels soar. Get started today. It's easy.

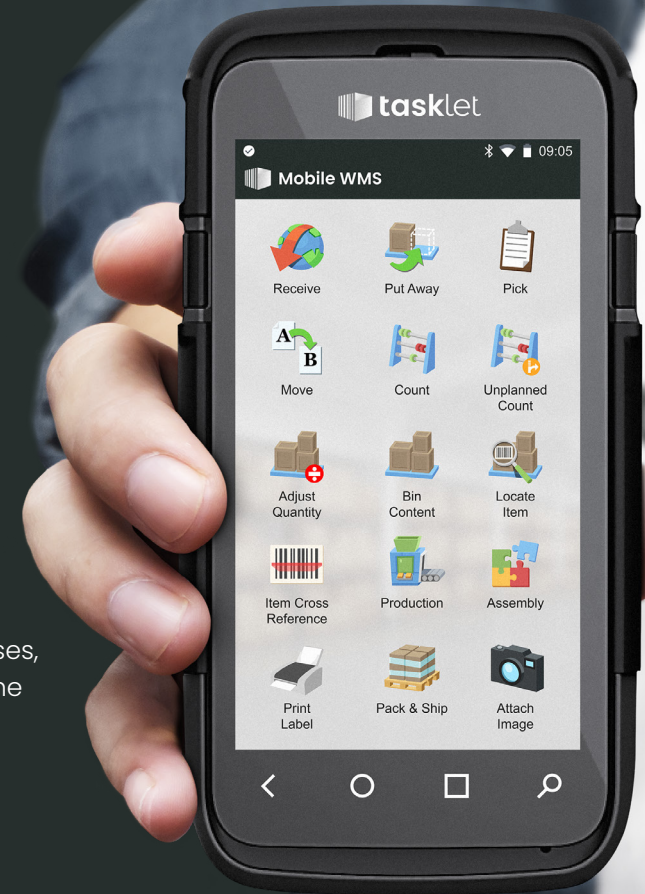
Since 2008, Tasklet has been revolutionizing warehouse management and helping companies optimize processes for increased efficiency.

Empowering performance is at the heart of what we do. Our digital and mobile Warehouse Management System (WMS) solution equips warehouse employees with the necessary tools to excel in their daily tasks and establish more efficient and streamlined warehouses.

With close collaboration with over 1700 businesses, we have developed a deep understanding of the challenges warehouses face on a daily basis. Drawing upon this knowledge, we have crafted a mobile scanning solution that addresses real problems and enhances workflows, tailored to accommodate companies of all sizes and industries.

Through our extensive global network of Microsoft partners, Tasklet ensures seamless implementation and ongoing support, ensuring that your warehouse operates at peak performance.

Ready to optimize your warehouse? Contact us now to get started!



[Book a Demo](#)



